



AVAILABLE IN 5 COMMUNITIES

Seiders Hill

Ridgewood

Hills at Valley View

The Horizon at Brush Valley

Woodlynn Preserve



**4
Beds**



**2.5
Baths**



**2-Car
Garage**



**2,104
-
2,658
Sq. Ft.**

The White Oak offers 2,113 sq. ft. of thoughtfully designed living space with an open and connected layout that complements today's lifestyles. Featuring four bedrooms, two-and-a-half baths, and a versatile flex room, this home provides the ideal balance of comfort and functionality. The open flow between the kitchen, breakfast area, and family room creates a welcoming environment for both everyday living and entertaining. Upstairs, the spacious primary suite includes a private bath and walk-in closet, offering a relaxing retreat. Homeowners can also choose to finish the lower level for an additional 511 sq. ft. of flexible living space. The White Oak also includes a two-car garage with options for width expansion and a walk-out door, adding even more convenience to this thoughtfully designed floorplan.



Have Questions? Ask...

KELLY

(484) 772-2693 / bhmarketing@berkshomes.com





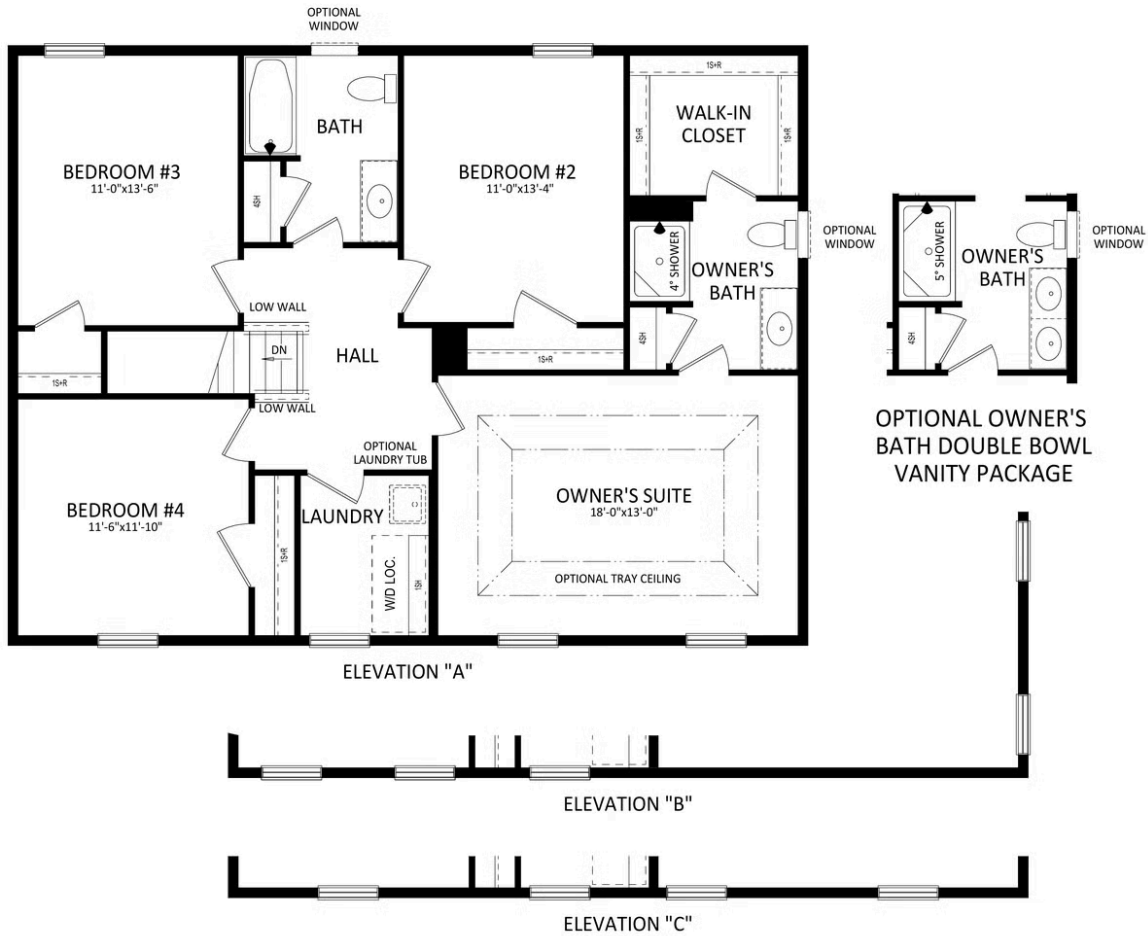
FIRST LEVEL

Have Questions? Ask...

KELLY

(484) 772-2693 / bhmarketing@berkshomes.com





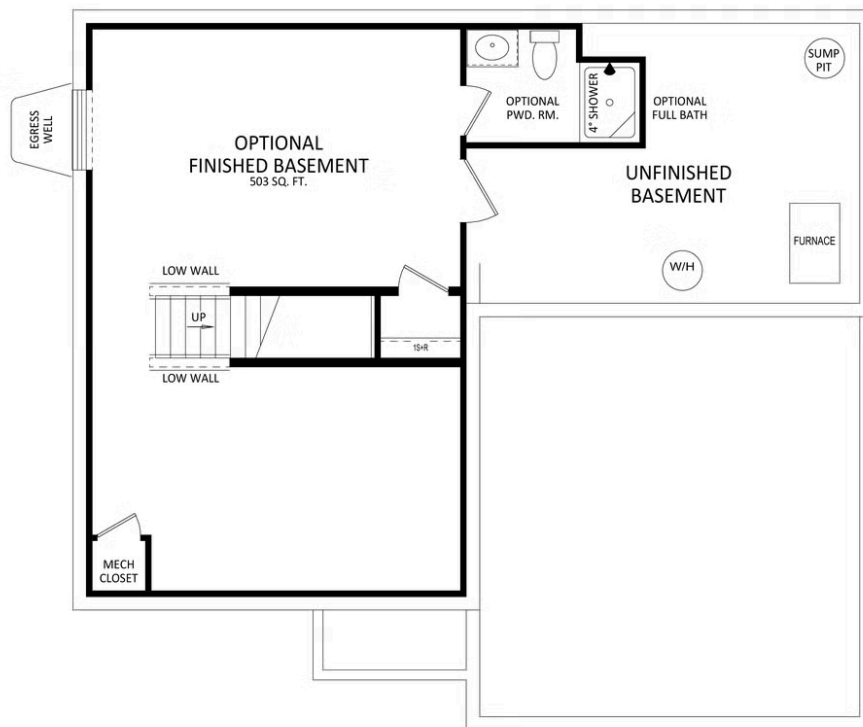
SECOND LEVEL

Have Questions? Ask...

KELLY

(484) 772-2693 / bhmarketing@berkshomes.com





LOWER LEVEL

Have Questions? Ask...

KELLY

(484) 772-2693 / bhmarketing@berkshomes.com

